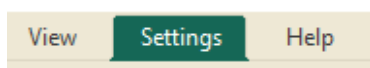


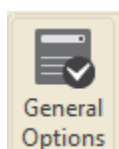
The **General Options** box allows you to change many settings for the software. When you make a change in the General Options box it will keep these settings as default settings every time you open the software.

To access the General Options box:

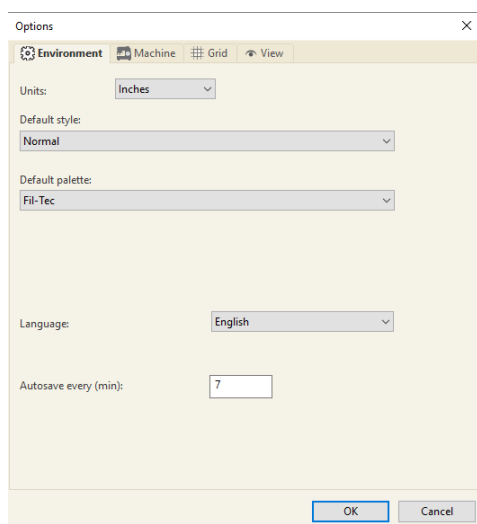
- Select the Settings tab



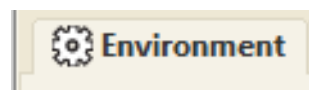
- Select General Options from the ribbon



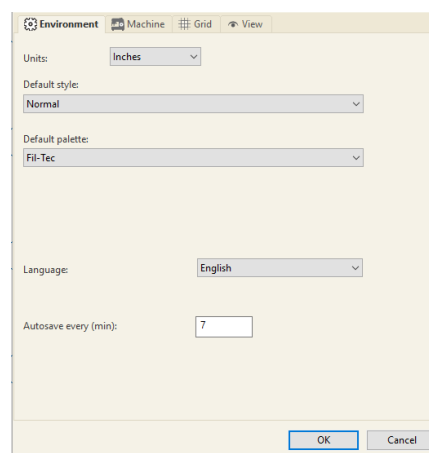
The Options box will appear on your screen.



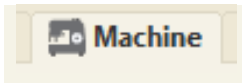
Tabs available in the General Options box include:



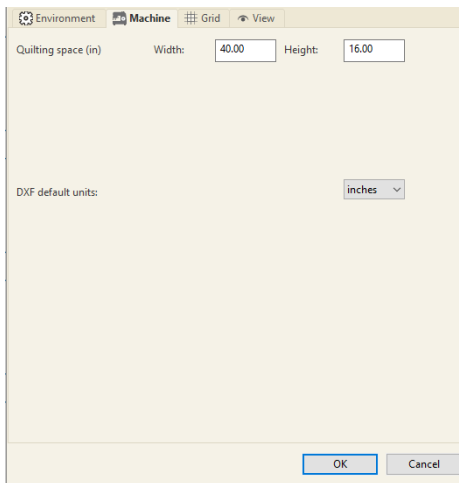
### ENVIRONMENT TAB



- **Units:** Select the preferred default, Inches or Metric. This may also be changed for immediate display by right clicking the ruler bar (top and left) of the display screen.
- **Default Style:** Only one setting is available: Normal. No need to adjust.
- **Default Palette:** The default palette is used when you are creating a new design. When loading a design that doesn't have color information, there are numerous thread manufacturers to choose from.
- **Language:** from the dropdown arrow choose from English, Chinese, Dutch, French, German, Italian, Portuguese, Spanish or Korean.
- **Autosave every (min):** Allows you to choose how often the software will Autosave.

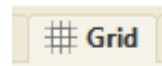


## MACHINE TAB

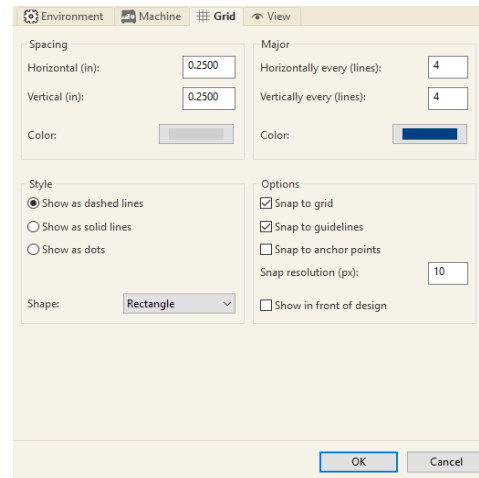


In this section you can set your Quilting Space to match your frame and change the units of measurement, choosing either inches or millimeters.

- **Quilting Space:** The quitable space in your frame. You set this according to frame size.
- **DXF Default Units:** Select whether the measurement units in DXF files should be in inches or metric in the dropdown menu



## GRID TAB



In this section you can set the parameters for the grid by selecting Spacing for both the Horizontal and Vertical. Other options available include choosing colors for both the spacing options and the Major grid lines.

In the style section, you can choose how your lines will show on your workspace. Choose to have a rectangle based grid, a diamond based grid, or both on your design page. Select to have objects you move snap to the grid, guidelines and anchor points as desired. This is helpful for aligning objects. Finally, you can choose to display the grid as dashed or solid lines or dots.

### Spacing

- **Horizontal Spacing:** Set the horizontal spacing on the grid. Defaults to .25 inches or 10 mm metric.
- **Vertical Spacing:** Set the vertical spacing on the grid. Defaults to .25 inches or 10 mm metric.
- **Color:** Choose the color for your minor lines in your grid.

## Major

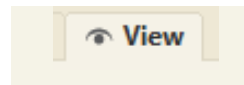
- **Horizontally every (lines):** Set the horizontal spacing on the grid. Defaults to 4, meaning every 4th line. This will give you a major line every inch if you have your spacing set to .25 inches.
- **Vertically every (line):** Set the vertical spacing on the grid. Defaults to 4, meaning every 4th line. This will give you a major line every inch if you have your spacing set to .25 inches.
- **Color:** Choose the color for your major lines in your grid.

## Style

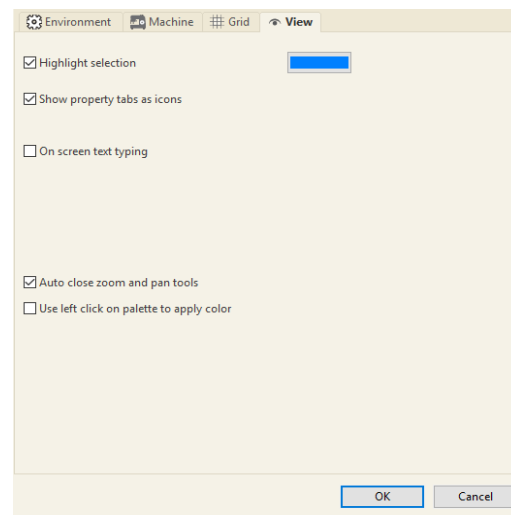
- **Lines Style:** Set the style of grid to dashed line (default), solid lines or dots.
- **Shape:** Choose the shape the grid will be shown in. You can choose Rectangle (default) or Diamond, or both.

## Options

- **Snap to grid:** If selected, edit point to the closest grid point when created or selected.
- **Snap to guidelines:** If selected, edit point to the closest guideline when created or selected.
- **Snap to anchor points:** If selected, edit point to the closest anchor point when created or selected.
- **Snap resolution (px):** Show in front of design: If selected, the grid will show in front of the design.



## VIEW TAB



View in this section, choose the color a design element will display when you select it in the software. You can also choose to enable on screen text typing, auto close zoom and pan tools and use the left click on palette to apply color.

- **Highlight selection:** This option will allow the user to turn “off” or “on” (default) a highlighted color on a selected object. The color of the highlighted object may be changed, at any time, for easier editing. Click in the color selection box to change the highlight color.
- **Show property tabs as icons:** If selected, the tabs in the properties box will be displayed as icons instead of names. This option eliminates/reduces scrolling across the tabs when viewing object properties.
- **On screen text typing:** If selected, a cursor will appear on the design page for text input instead of forcing input into the small text input box on the Properties >Text page.

- **Auto close zoom and pan tools:**  
Automatically revert to select or shape after using zoom or pan.
- **Use left click on palette to apply color:**  
If selected, this option will allow you to left mouse click on a color in the palette to apply to the design.

**NOTE** – *Changes to any of the General Options will not apply to designs currently except grid options. It will only apply to designs opened after the change has been implemented.*