

Pro-Stitcher® or Pro-Stitcher Lite™ Simulation Installation Instructions

You can create a simulation version of the Pro-Stitcher Studio which enables you to use the software on any computer running Microsoft Windows 10 or later.

You may switch between simulation mode and regular mode on the Pro-Stitcher display, but you when in simulation mode, the motors will not connect and the cross hairs are green.

Switch to Simulation by following these steps:

1. Select the **Settings** tab.
2. On the ribbon, select **Advanced**.
3. From the drop down menu, choose **General**.
4. In the sidebar, tap the **Simulation On/Off button**.
5. You will be prompted to restart the program.

When running Pro-Stitcher on a standalone Windows computer, it only runs in simulation mode.

Pro-Stitcher Simulation Tip:
To move the cross hairs in the workspace, select the Simulation tool from the Select Toolbar.



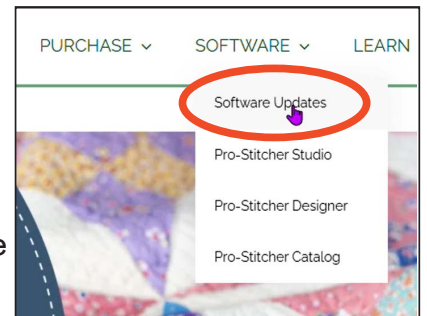
PC Requirements

Windows 10 or later
Net framework 4.6.2 or later
MS Visual C++ 2015 or later
Open GL 3.0 or later

Downloading the Pro-Stitcher Studio Software

1. On a computer connected to the Internet, go to <https://www.ProStitcher.com>.
 - a. Log in to your account (or register for an account- registration is free).

2. Hover cursor over Software in the top menu, and then select **Software Update** from the drop-down menu.

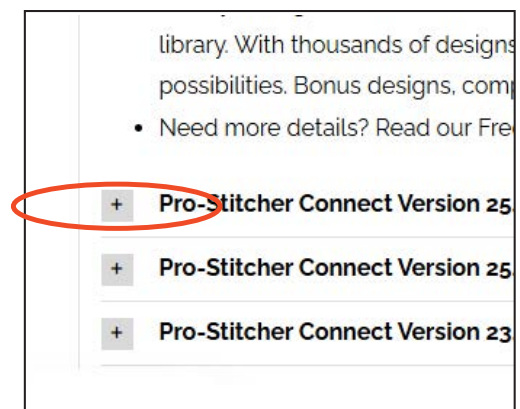


3. Scroll down to **Software Versions and Downloads**, select the tab with the desired software type.

Software Versions and Downloads



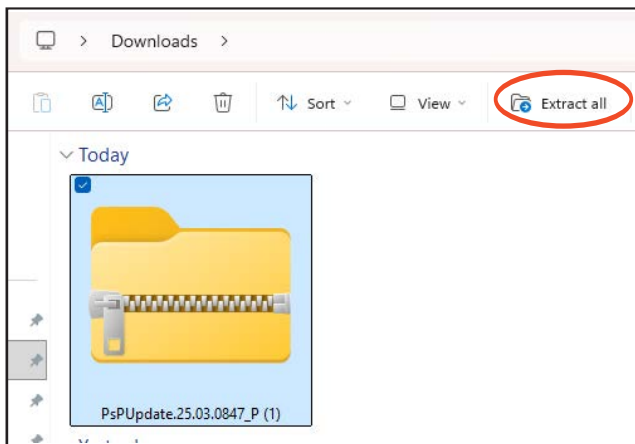
- a. From the list of software versions, click the + icon next to the desired version to expand and view details.



4. Click Download. The zip file will automatically download to your computer. Click **Save**.



5. The zip file saves to the **Downloads** folder. Open your Downloads folder. **Select** the PSPUpdate.{Version#} folder, then select **Extract All** to unzip the files.

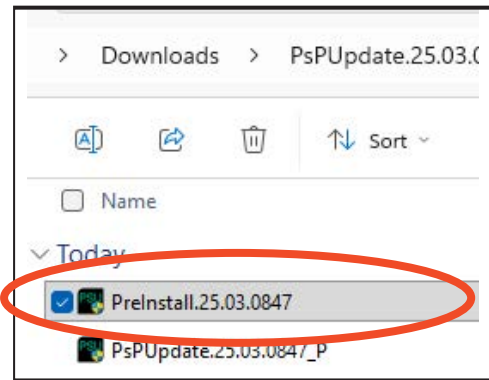


6. Click **Extract**. The files will be saved in a new folder and the new folder will automatically open. There will be two files, a PreInstall and a PsPUpdate file.

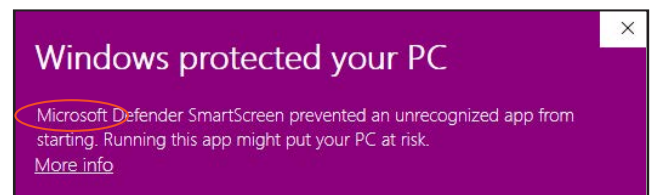
Install Pro-Stitcher PreInstall Onto Your Computer

NOTE: The PS Pre-Installer updates your computer with required support software and must be run prior to installing Pro-Stitcher Studio for the first time.

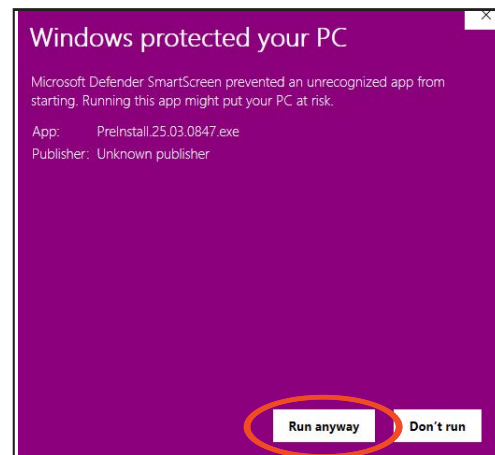
7. Double click the PreInstall{version#} file.



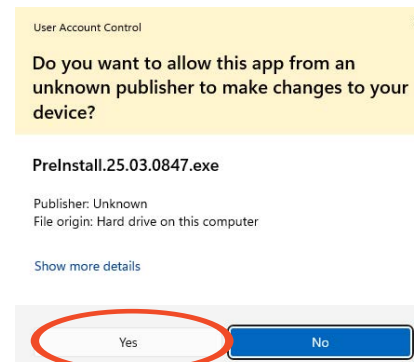
8. A warning window will pop up. Click on More Info to override.



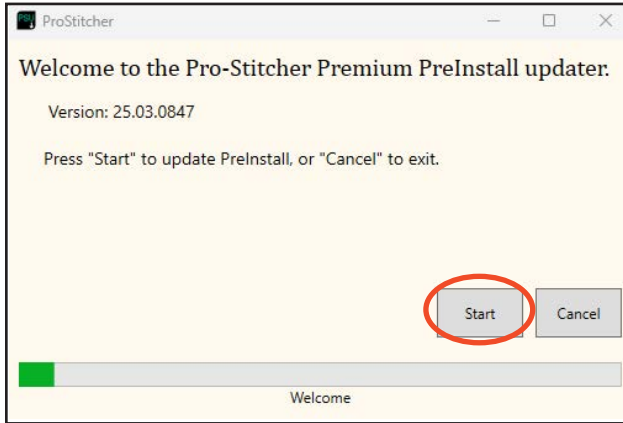
9. Select **Run anyway** on the next screen.



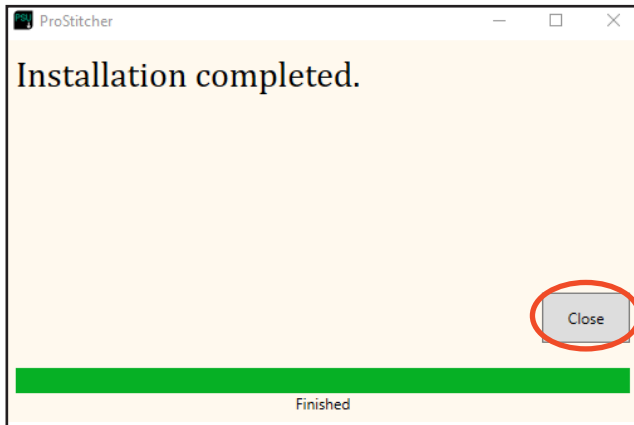
10. Another warning window will load. Select **Yes** to continue.



11. Click Start to install.



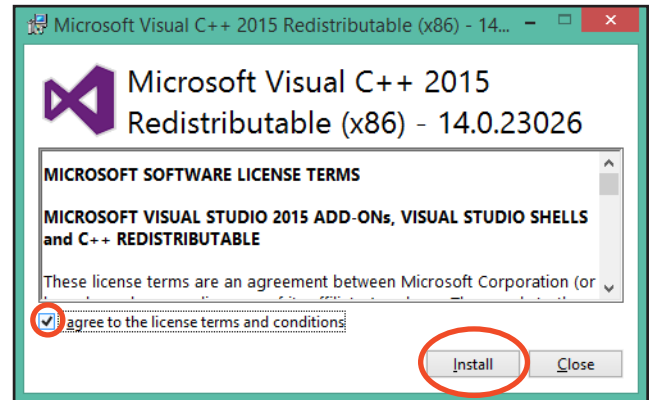
12. If your computer is up to date, you will receive messages that the files are already installed. Select **OK** on the pop-up windows, and then select **Close** in the updater window once installation is complete.



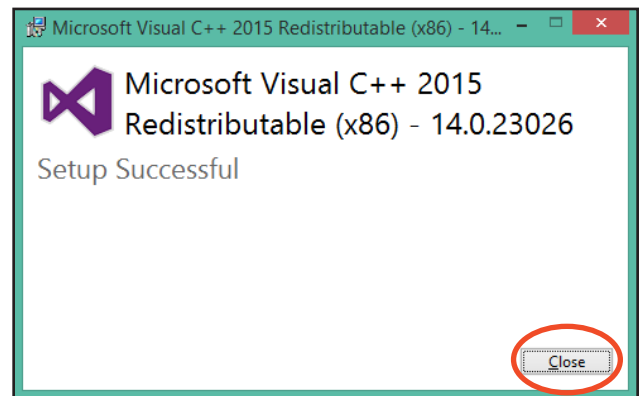
13. Go to page 5 and resume at step 21 and proceed with **InstallPro-Stitcher Simulator Onto Your Computer**, unless you receive prompts to complete steps 14-21.

If prompted, follow the steps below.

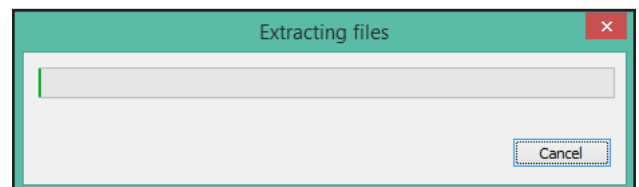
14. When the Visual C++ Redistributable installer appears, select the “I agree...” box and then select **Install**.



15. Select **Close**.

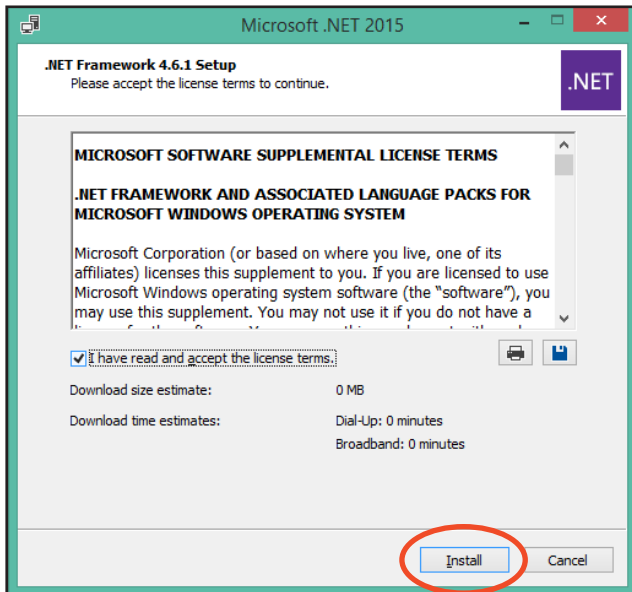


16. Wait for up to several minutes for the next step to finish.

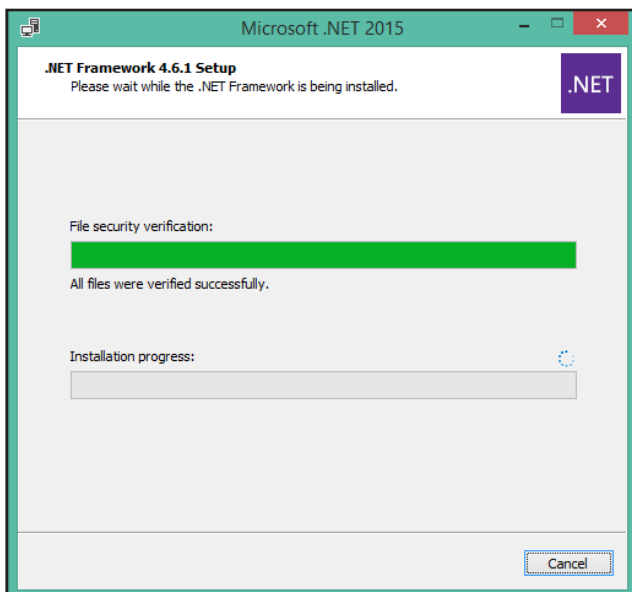


17. Mark the “I have read...” box and select **Install** to begin installing the .NET 4.6.1 Framework files required for Pro-Stitcher.

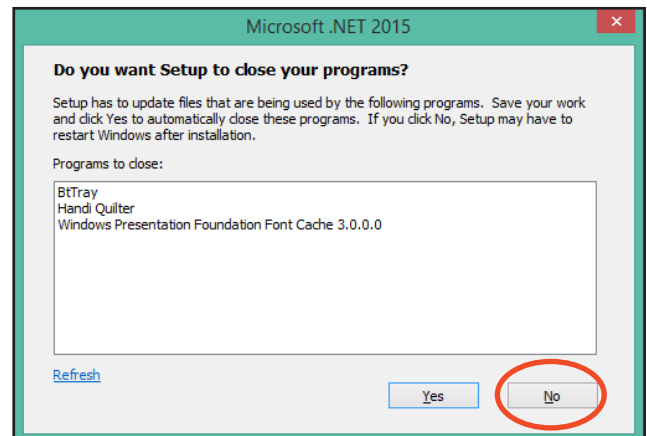
➡ **IMPORTANT:** If the .NET installer indicates that you have a more current version, close the message box and continue to follow the on-screen instructions to complete Pro-Stitcher installation. Reboot the computer when it is finished.



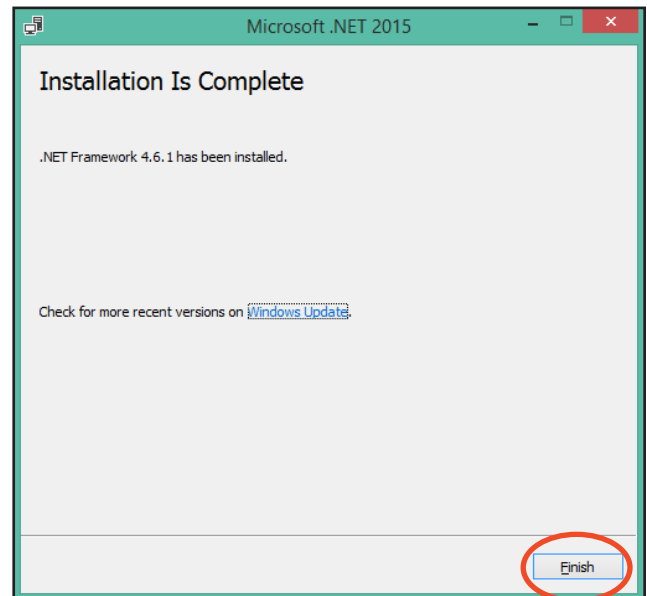
18. Wait until the installation finishes. This may take several minutes.



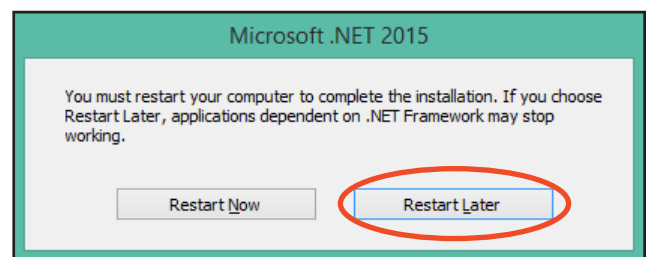
19. If you receive a message asking you to close some programs, select **No**.



20. Press **Finish** when the installation is complete.



21. When prompted to restart the computer, select **Restart Later**.



21. When you see the Installation Completed message, press the **Close** button.

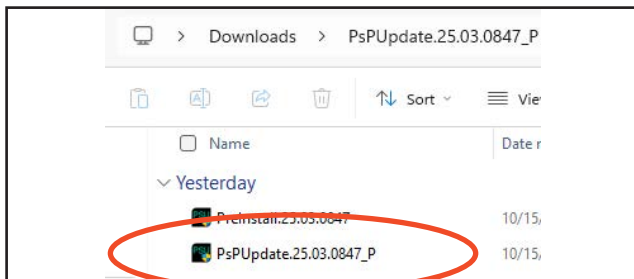


22. Upon completion, the Pro-Stitcher Pre-Install software will automatically try to start up, but you will receive an error message due to the .NET software installation not being fully complete. Close the message, which returns you to the Windows desktop.

23. Restart the computer to complete the installation process.

Install Pro-Stitcher Studio Onto Your Computer

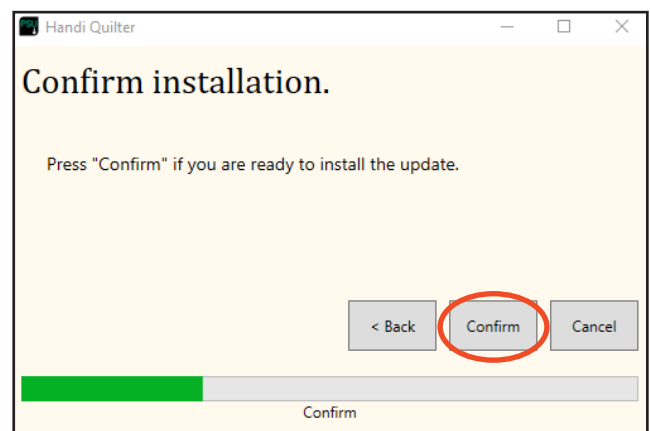
24. Locate and run PsPUUpdate.[Version#].exe by double clicking the file from your downloads folder. You may need to follow steps 8-10 again to override Windows warnings.



25. Select **Start** when this screen appears.

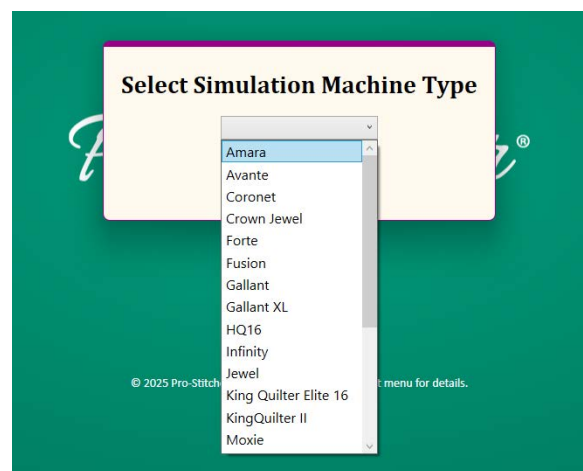


26. Select **Confirm** when this screen appears.



27. Installation can take a few minutes. Select **Close** when indicated.

28. Select your machine type from the drop down menu.



Copying Designs from Pro-Stitcher Tablet to PC or Laptop

- **IMPORTANT:** Installing Pro-Stitcher on a PC, laptop, or non-Pro-Stitcher tablet will not copy the Designs file folder. This will need to be done manually.

- **IMPORTANT:** Once Pro-Stitcher Simulation is installed, the display settings may need to be adjusted for Pro-Stitcher Simulation to work correctly. Select the Settings tab. Select **Display**. Maximize the window for Pro-Stitcher. In the **Monitor** box, measure the monitor and enter the correct dimensions.

To copy the Designs folder from the Pro-Stitcher tablet:

1. Insert a USB flash drive into the Pro-Stitcher tablet's USB port.
2. Open Windows File Explorer and navigate to C:\Designs.
3. Select C:\Designs and drag or copy and paste the folder to the USB Flash drive.
4. Once the Designs folder has successfully copied to the USB flash drive, remove the flash drive from the Pro-Stitcher tablet.
5. Insert the flashdrive in the USB port on the PC, laptop, or tablet.
6. Open Windows File Explorer.
7. Locate the Designs folder on the USB flash drive.
8. Drag or copy and paste the folder from the USB flash drive to the main directory C:\.