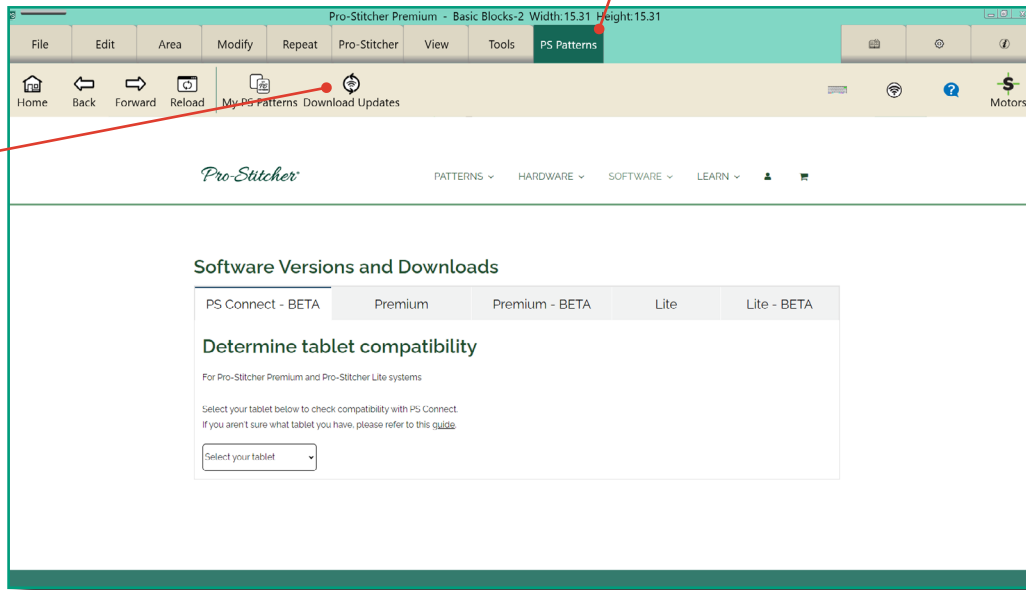


PS Patterns: Select this button to open up a window to the Pro-Stitcher website.

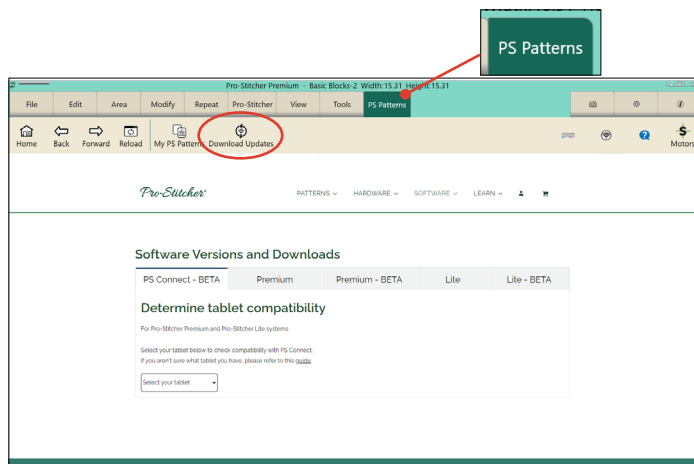
Download Updates: Select this button to go to the Version and Downloads page for Pro-Stitcher.



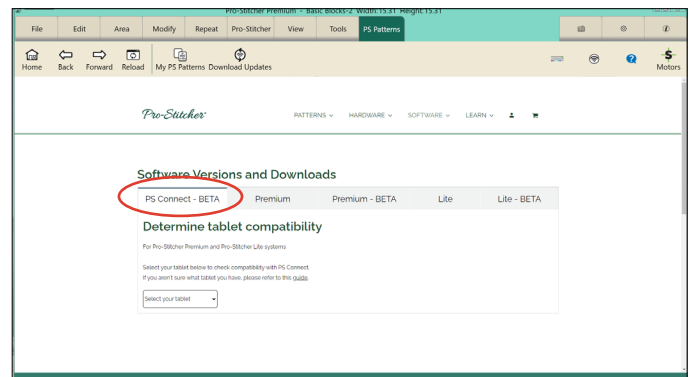
NOTE: In order to go to the Pro-Stitcher website, your Pro-Stitcher tablet must be connected to Wi-Fi. Make sure to follow the Connect to Wi-Fi tutorial first before attempting this tutorial.

Go to the Software Version and Downloads Page

1. When you are in the Pro-Stitcher software, select the PS Patterns tab along the top of the screen. This will open the Software and Version Downloads page on.



3. Select the PS Connect section.

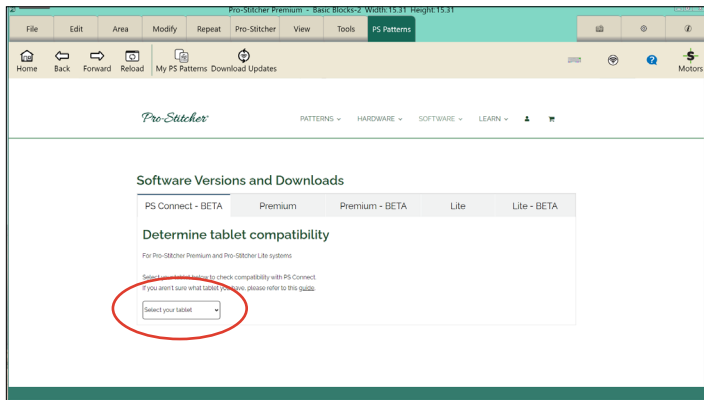


Select and Download the Update

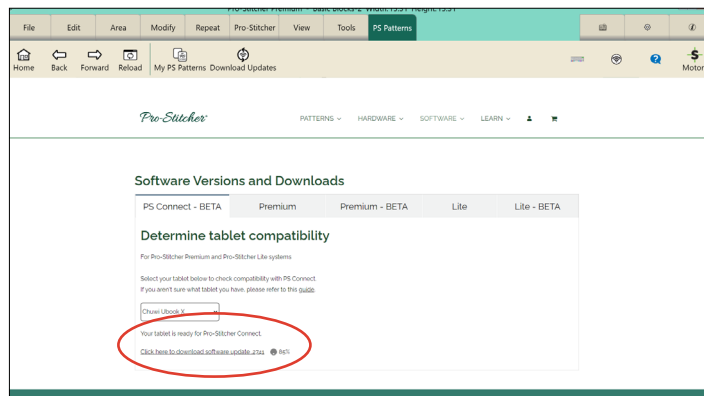
1. Select your tablet to download your specific version.
Note: Some tablets may not be compatible. If you don't know your tablet brand or model, contact technical support.

2. Select the Download Updates button on the Navigation Bar. This will take you to the Software Versions and Downloads page on the Pro-Stitcher website.



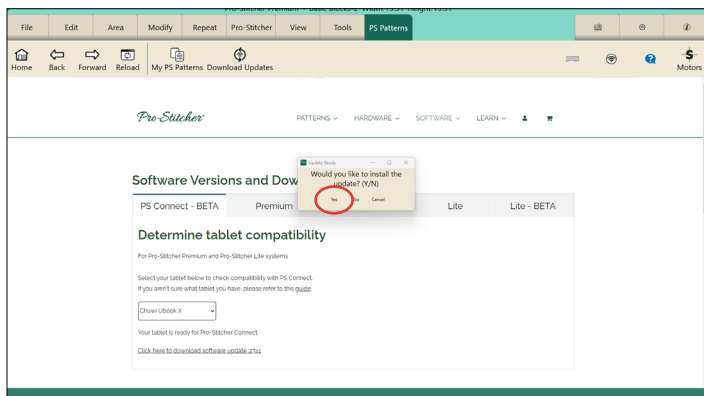


2. After you select your tablet, a download link for your particular tablet will pop up below the drop-down box. Tap on it to download the latest update.



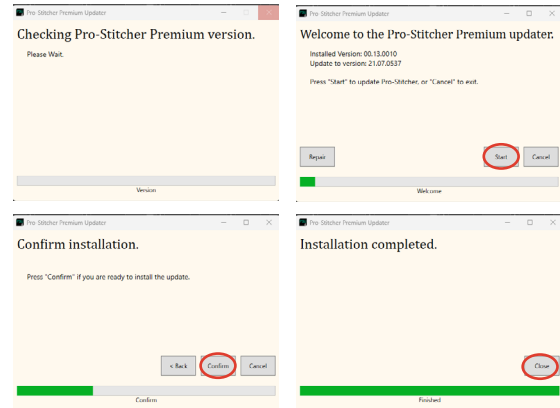
You will see a percentage next to the software version number to indicate that the download is in progress. Be patient as the download could take several minutes.

3. Another window will pop up, asking you to install the update. Select Yes.



Install the Update

1. Follow the on-screen steps to complete the download.



2. After the installation is complete, Pro-Stitcher will restart itself to finish the updating process. When the software has restarted, the update is finished, and you are now free to use Pro-Stitcher again.